

A publication of Business Staffing, Inc.

# REVIEWS & STUFF

A monthly review of stuff affecting employees of Business Staffing, Inc.



Feature:

## Sharing the Road

Carvie's Corner	4
News Release	5
PuzzleZone	8
Q & A	2
Reviews & Stuff	3
The Silver Platter	
Safety Meeting	6
The Taylors	4

*Business Staffing, Inc.*  
 Safety Dept.  
 2505 N. Frazier  
 Conroe, TX 77303  
 (936)521-1500  
 (800)368-2375  
 www.business-staffing.com

## Big Rigs and Sharing the Road

[fcs.tamu.edu/safety/passenger\\_safety/articles/big\\_rigs\\_and\\_sharing\\_the\\_road.php](http://fcs.tamu.edu/safety/passenger_safety/articles/big_rigs_and_sharing_the_road.php)

It takes special driving skills and knowledge to drive safely around big rigs. You cannot drive around the big rigs the way you drive around other vehicles. The most important tip is to give a wide berth to the big rig. Statistics show that collisions between large trucks and lighter vehicles frequently result in death to the driver or occupants of the "other vehicle." In 80 percent of fatal accidents involving big trucks and lighter vehicles, it is not an occupant of the big truck who dies.

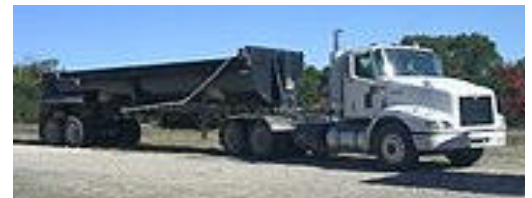
Those big rigs are different because they have a much longer stopping distance than other vehicles, and it is longer still on wet roads. The ability of the rig driver to control their rig during emergency braking is very limited. Also, truck drivers cannot see you nearly as well as you can see the truck; if there is a crash, you lose.

Drivers of smaller vehicles need to practice the following safety tips:

- ❖ As a general rule, keep as much space as possible between your vehicle and large trucks.

- ❖ Do not cut in front of a truck just because you see open space there. That space is the truck's cushion of safety because of its longer stopping distance. If you have to stop suddenly, it will be very difficult for the truck to avoid hitting you. Also, if the truck has a long hood, the driver may not be able to see you at all.

- ❖ Do not linger alongside a truck;



Cont on p. 3

## Tips for Driving Near an 18-Wheeler

[www.associatedcontent.com/html](http://www.associatedcontent.com/html)

Driving an 18-wheeler gives you a better view of what's going on around you. It also affords a birds-eye view of what people are doing in their cars, when they're suppose to be driving.

Reading the newspaper, drinking coffee, talking on the phone all at the same time while supposedly driving. And what's really bad is doing this in rush hour traffic.

Putting on make-up, styling hair, sewing, reading books and putting on pantyhose while driving down the road. Women are great multi-taskers, but it takes two hands to put pantyhose on without ripping them to shreds. What body part is holding the steering wheel? How can anybody control a vehicle safely without at least one hand on the steer-

ing wheel?

The majority of people don't realize how easily they're distracted from driving just talking on their cell phones. Its very obvious if you just pay attention. People start slowing down or speeding up; they drift around in their lane or into another lane; they run up on other cars and have to hit their brakes hard; they almost miss their turn-offs and have to brake hard; and other various things.

All of the things mentioned seem minor compared to how people drive around an 18-wheeler. Some of these things are done simply because people do not understand what 18-wheelers can and can't do.

First of all, banish the myth that

Cont on p. 7

## Steer Clear of the "No Zone"

### Reviews & Stuff Staff

Editor:  
carvelynCHAPMAN

Editorial Assistant:  
richardCHAPMAN  
bartKNAPP  
harrySEWILL

Technical Advisor:  
tracyHAUTAJARVI  
nancyANDERSON

Contributors:  
carvelynCHAPMAN

Direct all inquiries to:  
Business Staffing, Inc.  
Safety Dept.  
2505 N. Frazier  
Conroe, TX 77303  
[www.business-staffing.com](http://www.business-staffing.com)

**U**nlike passenger vehicles, big rigs don't have rearview mirrors, and drivers don't have the luxury of manually checking their blind spots. These blind spots are so large that, from the driver's perspective, entire cars disappear. Thirty-five percent of all car-initiated fatal accidents occur because the car was traveling in one of the truck's four blind spots.

- A** Front of the truck. Due to the height and size of big rigs, drivers cannot see what lies approximately 15-20 feet in front of their vehicles, putting pedestrians at a huge risk. America's Road Team captain and driver of over 1.8 million accident-free miles, Jeff Arnold, suggests pedestrians make eye contact with the driver before crossing in front of their truck. If you cannot catch their eye, it is not safe to cross.
- A** Left and right sides of the truck. Just beyond the cab on both driver and passenger sides, and extending three lanes of traffic across and the length of the truck, lie the largest and most dangerous blind spots. "If you can't see my face in the mirror, then I can't see you," Arnold explained.
- A** Rear of the truck. A truck driver's rear blind spot can extend up to 300 feet back, making tailgating a dangerous situation. The metal bumpers that trucks have do not absorb shock well and are very unforgiving to passenger vehicles. Since the truck is as wide as one whole lane of traffic, vehicles directly behind it are unaware of any road conditions ahead and are ill prepared for any incidents occurring further down the highway.



## Q & A

**Q** Is it legal to make a left turn onto a one-way street with traffic heading to the left after having come to a complete stop at a red light.

**A** The answer, in most cases, is "Yes, this is a legal maneuver." According to AAA, these locations prohibit a left turn on red: Connecticut, Missouri, North Carolina, Rhode Island,

Vermont and New York City

Obviously, if there is a red left-turn arrow, a left turn is expressly prohibited.

**Q** What is the length of time needed to stop an eighteen wheeler

**A** The length of time to stop an eighteen wheeler is 40% greater than that of an automobile. Depending on the weight of their load, whether they are bobtailing, road conditions, and other factors.

**Q** What is a tandem?

**A** A "Tandem" is a set of TWO tires on a tractor-trailer. They are used for safety (redundancy) so if one tire blows the others will continue to hold up until the tire is repaired.

---

# Sharing the Road Safely

*consumerguideauto.howstuffworks.com/industry-insider.htm*

## Get your "Ears On"

Focus all your attention on driving and what's going on on the highway. "People do a lot of things behind the wheel, but mostly, they don't pay attention. We get so busy that we forget the most important thing we can do in the car is pay attention to our driving," said Suzanne Stempinski, a trucking-industry journalist with more than 1.5 million safe driving miles under her belt.

## Pass Quickly and Safely

"Always pass on the driver's side, where the shortest blind spot is, and don't linger along side the truck. Accelerate, pass quickly, and maintain your speed," Arnold advised. Before returning to your lane, ensure that you can see the entire front of the truck in the rearview mirror. According to the American Trucking Association, in 72% of same-direction sideswipe accidents, the passenger vehicle was the striking vehicle.

## Don't Stop Short

At 55 mph, large trucks, and all their weight, are moving at the rate of 80 feet per second. A fully loaded tractor-trailer weighs an average of 80,000 pounds and takes roughly the length of a football field to safely come to a complete stop. Anticipate the flow of traffic before cutting in front of trucks to reduce the risk of getting rear-ended. Over half of fatal truck crashes involve impacts with the front of a truck. "You can't just swerve out of the way of a situation. When you drive a truck, you don't have much margin for error," Stempinski said.

## Know Before You Go

Before each run, big-rig drivers check

their equipment for any malfunctions, a practice from which all drivers could benefit. Stempinski suggests that, once a month, passenger-vehicle drivers should walk around their vehicle and check for burned out light bulbs or worn tire treads. In her highway experiences, catching these issues before hitting the road could make the difference between a safe drive and highway accident.

## Driving Concerns

The large-truck fatal crash rate is at an all-time low--1.9 fatal crashes per 100 million vehicle miles traveled, largely due to a recent push toward motorist education. Established in 1986 by the American Trucking Association, America's Road Team is an outreach organization designed to spread the word about truck safety to all motorists and pedestrians. Traveling throughout the country from schools to truck stops to radio and television stations, the group strives to promote the trucking industry's commitment to highway safety.

Led by a team of professional truck drivers with expert driving skills and extraordinary safety records, the mission statement of America's Road Team is "Safety is our Driving Concern." "Members of the team have a desire and passion for safety," Arnold said.

There are approximately 2.6 million large tractor-trailer trucks on the road in the United States. So the next time there's a semi "knocking at your back door," practice safe driving by sharing the road with your highway neighbors. Copy that?

## Reviews & Stuff

This newsletter is intended to make you aware of some of the rules and regulations affecting you in the workplace. We would like to give you some insight into the progress of Business Staffing Inc., and to keep you abreast of the changes affecting staff leasing.

Please feel free to write to us and let us know your ideas on the things we could do to improve our services. We would appreciate your comments.

---

## Big Rigs and Sharing the Road

Cont. from p. 1

you may be in the trucker's blind spot. The size and configuration of many trucks, especially those with trailers, create large blind spots for truck drivers. If you cannot see a truck driver's face in one of his mirrors, he/she cannot see you and probably does not know that you are there.

❖ If you are following a truck and cannot see the truck's side mirrors, you are driving too close. The driver cannot

see you, so back off.

❖ Always give trucks plenty of room when they are turning. The relationship between the cab, mirrors, and trailer change constantly during a turn, creating varying blind spots. Also, trucks need extra space to turn because of their size.

A collision with a large truck can have tragic consequences for the occupants of the smaller vehicle. Always adjust your driving around the big rigs.

# Over-the-Road Facts

[consumerguideauto.howstuffworks.com/industry-insider.htm](http://consumerguideauto.howstuffworks.com/industry-insider.htm)

- In 89% of fatal head-on passenger vehicle/truck crashes, the passenger vehicle crossed the centerline into the truck's lane.
- In 88% of opposite direct sideswipe accidents, the passenger vehicle was the striking vehicle.
- 92.2% of fatigue-related crashes involve drivers of passenger vehicles.
- Of all fatigue-related fatal crashes, only 3%-6% involve truck drivers.
- In 2002, the trucking industry hauled 8.9 billion tons of freight.
- One out of every 14 people in the U.S. works for some part of the trucking industry.
- The trucking industry uses approximately 44.5 billion gallons of diesel fuel and gasoline annually.
- Professional truck drivers drove 400 billion miles in 2003, a 146% increase in 25 years.

*According to studies done by the American Trucking Association*

*How  
poor  
they are  
that  
have no  
patience.*

*-Shakespeare*



**Do you have your  
OSHA 300A Posted?**  
If you have not received your company's forms  
please call your BSI regional office.

## **Carvie's Corner**

## The Taylors

### Editorial

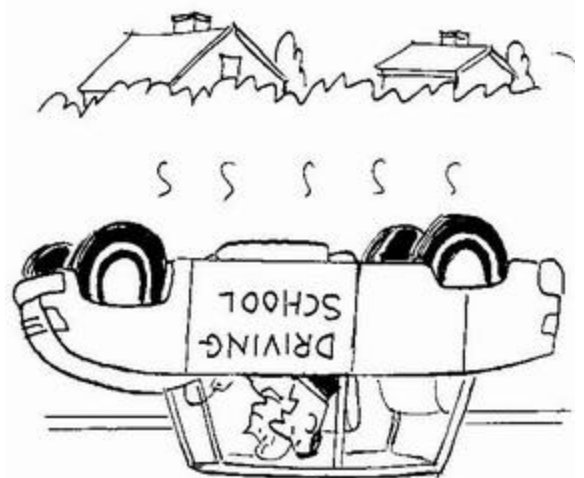


**K**ids love to make them blast their horns--everyone else would love it if they moved out of the way. They're big, noisy, smelly, slow, and seemingly always hogging the road. Without them, this country would virtually stop. Americans rely on big trucks more than they know.

As the population grows, so does consumer product need, putting more trucks on the highways and forcing more drivers to share the road.

Most of our goods are delivered via 18-wheelers. From gasoline to food and clothing. In fact eighty-two percent of communities in the United States depend solely on the trucking industry for the delivery of goods.

Considering this, we must all do our part to ensure safety on the highways, whether driving around big rigs or not.



**"That's not what turn the car around means, young woman."**

Carvie  
ADL

# NEWS RELEASE

## Texas Insurer Group Takes Issue with NAIC Homeowner Report

[www.insurancejournal.com](http://www.insurancejournal.com) / March 4, 2009

The National Association of Insurance Commissioner recently issued its annual report on homeowners insurance. The report, based on figures from 2006, the latest year from which data is available, ranks Texas as having the highest homeowners rates in the nation.

According to the NAIC report, the statewide average annual premium for an HO3 policy (HO-B policy equivalent) in Texas was \$1,409 per year in 2006 compared with the nationwide average of \$804.

The Insurance Council of Texas, however, has disputed the accuracy of the NAIC's report.

The ICT pointed out that the report compares the premium of an HO3 policy (HO-B) with other states. In Texas, only one third of policyholders owned an HO-B policy in 2006. Today, its use is down to 15 percent, the ICT said.

The Texas Department of Insurance (TDI) lists in its report that the homeowners insurance premium statewide average is \$1,214, \$200 less than what is reported by the NAIC. TDI's report for 2006 would place Texas third behind Florida and Louisiana.

TDI's 2007 reports shows Texas homeowner rates dropped .7 percent from 2005 to 2006, while the NAIC shows a gain of 2.7 percent.

"The NAIC report is three years old and misleading. We are doing a lot better than the report would lead one to believe," the ICT said in its release.

Hear Ye,  
Hear Ye,  
Hear Ye!

All ye who  
haveth eyes  
to see and  
ears to  
hear!

If you think  
you have an  
interesting  
story or  
article that  
you would  
like to see  
printed, in  
Reviews &  
Stuff send  
it in to me.

If we use it  
in one of our  
publications,  
we will give  
you \$25.00.

Send all  
stories,  
articles and  
inquiries to:  
C. P.  
Chapman

(See address  
on page 2)

Check a map for the EXIT you need to take  
from the highway  
Be sure to watch your FUEL gauge and plan  
ahead on long trips  
Stay in your LANE and watch for other drivers  
not staying in theirs  
Do not follow too close to a SEMI or tractor  
trailer; they can't see you  
Many highways have GUARD rails to keep you  
from going off the road  
Watch for SIGNS that tell you about upcoming  
exits and points of interest  
Obey the SPEED limit, especially when driving  
at night or in bad weather  
Only use your high-beam LIGHTS when there  
are no oncoming cars  
Keep off the MEDIAN between oncoming  
lanes; pull off to the right shoulder  
Accelerate to match the traffic speed when  
entering a freeway ONRAMP  
The State PATROL is there to ensure highway  
safety and enforce state laws  
Some highways have a RUMBLE strip to warn  
you if you're going off the road  
Turn on your lights to be seen better when  
entering a TUNNEL  
Watch for ANIMALS in the road and try to  
avoid them

BRIDGES form ice before surface roads due to  
cold air passing under them  
Share the ride in a CARPOOL and you may be  
able to use special lanes  
Mountain highways have RUNAWAY truck  
ramps for trucks with brake failures  
Listen to the radio for the TRAFFIC report to  
help avoid slow spots  
Never drive if you have been DRINKING or  
are very tired  
Watch for ice in FREEZING weather, and be  
sure to leave enough room to stop  
Pulling over at a REST STOP will let you  
stretch your legs and get refreshed  
Avoid traveling during RUSH HOUR in cities  
if possible  
Never TAILGATE or follow too closely to the  
car in front of you  
Carry a cell phone to call for help if your car  
has a BREAKDOWN  
Pull to the right to allow EMERGENCY vehi-  
cles with flashing lights to pass  
Usually INTERSTATES that run north-south  
are odd-numbered, east-west are even  
Slow down and pay extra attention when driv-  
ing in CONSTRUCTION zones  
Always check for crossing traffic at an INTER-  
SECTION even you have the light



# The Silver Platter Safety Meeting



## Standard, Film or Topic of the Month:

<b>Safety Around Big Rigs</b>

## Incident Review:

Incident / Near Miss	Action taken to prevent reoccurrence
Car hit 18-wheeler and caused multi-car pile-up.	Pay attention to the space around an 18-wheeler. You may see them, but they may not see you.
	When possible, give them room to maneuver.

## Questions and Suggestions:

Submitted by	Discussion / Topic	Status
Derek	How can we keep car drivers out of the way of 18-wheeler drivers?	Education, understanding and patience are the keys to keeping automobile drivers safe and out of the way of an 18-wheeler

## Material Safety Data Sheet(s) Reviewed:

--

## Safe Work Practice:


## Inspection / Housekeeping:


## Sign-In-Roster


Employee Signatures

### Safety Videos

6. Good Driving is an Attitude

160. The Five Minute Inspection

170. Sharing the Road With Rolling Rigs

202. Commercial Trailers

223. Speeding Cars

224. Speeding Trucks

238. Good Driving is an Attitude

---

# Sharing The Road With Big Rigs

[www.driversedguru.com](http://www.driversedguru.com)

**R**ecent research conducted by the AAA Foundation for Traffic Study found that of all truck-related car fatalities, 75 percent are car-initiated. That means that it wasn't the trucker's fault, but rather the driver of the passenger car.

Therefore, it's vital that your teenager learn to share the road with these 80,000 lb behemoths. I've included a few tips on sharing the road with large trucks.

\* When passing a truck, be sure to always pass on the left side and don't cut back in front of the truck until you can see its headlights in your rearview mirror. Avoid passing on the right as the truck's blind spot is much larger along the right side of the trailer.

\* Trucks require a much greater distance to stop than cars. If you are in front of a truck, never stop abruptly. The truck cannot stop as quickly as you can.

\* If a truck is stopped on a hill, it will roll backwards when it begins to accelerate. If you find yourself behind a truck on a hill, leave extra space as a precaution.

\* If you are driving behind a tractor-trailer and cannot see his side mirrors,

the truck driver will not be able to see you. The four blind spots depicted in the picture above show which spots to avoid.

\* If a truck in front of you is attempting to make a right turn, it will swing out to the left side prior to making the turn. The same goes for the opposite direction. Don't try to pass or you may get clipped by the edge of the truck.

\* On windy days, try to stay away from trucks altogether.

Never drive alongside a truck for longer than you would need to pass it. Turbulence from a truck on a windy day can cause a car to swerve off the road and even flip in bad weather conditions. To minimize this, stay to the outer edge of the lane away from the truck and hold onto the wheel tightly with both hands.

\* Do not swerve in and out of the lanes to avoid trucks. Large trucks cannot maneuver quickly. Your erratic driving may cause an accident due to the truck's inability to react quickly enough to your behavior.

Lastly, always drive courteously. Be respectful of everyone on the road, including trucks.



---

## Tips for Driving Near an 18-Wheeler

Cont. from p. 1

since 18-wheelers have air brakes they can stop on a dime. Wrong answer! If an 18-wheeler is driving 55 mph, on flat ground, with the roads dry and fully loaded, it will take over the length of a football field to safely stop. Therefore, if your driving down the road under the conditions listed and cut over in front of an 18-wheeler and instantly stop to make a left turn, your are going to get hit.

18-wheelers have a lot of blind spots. Drivers have to rely on their mirrors to see what's going on beside and to the rear of them. If your are following to close or your in a blind spot beside the truck and the driver has to stop or change lanes suddenly, he could run over you or you could run into him.

Drivers should be checking their mirrors constantly, but at times you have

to focus all your attention on what's happening in front of you, if only for an extra 10 seconds. In that 10 seconds a car can move into a blind spot on a truck without the driver being aware of it. If you stay in the blind spot an accident can happen so go ahead and get past them.

Here are some do's and don'ts for those that are interested in driving safely around 18-wheelers.

**Do.** . . . follow at a safe distance.

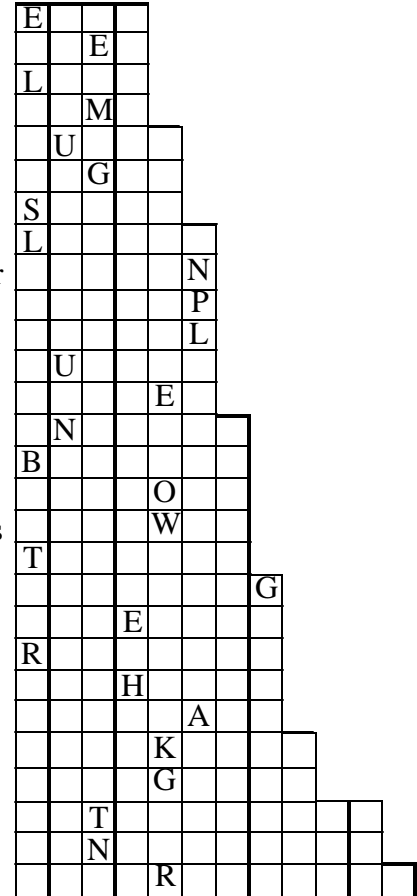
**Don't.** . . tailgate where you have no visibility and are in danger from rubber or other objects being thrown into your car.

**Do.** . . . pass trucks quickly.

If we all would drive more defensively, be a little more courteous, and use a little more common sense, there would be a lot less accidents on the road.

# DRIVING TIPS

- ♦ Check a map for the \_\_ you need to take from the highway
- ♦ Be sure to watch your \_\_ gauge and plan ahead on long trips
- ♦ Stay in your \_\_ and watch for other drivers not staying in theirs
- ♦ Do not follow too close to a \_\_ or tractor trailer; they can't see you
- ♦ Many highways have \_\_ rails to keep you from going off the road
- ♦ Watch for \_\_ that tell you about upcoming exits and points of interest
- ♦ Obey the \_\_ limit, especially when driving at night or in bad weather
- ♦ Only use your high-beam \_\_ when there are no oncoming cars
- ♦ Keep off the \_\_ between oncoming lanes; pull off to the right shoulder
- ♦ Accelerate to match the traffic speed when entering a freeway \_\_
- ♦ The State \_\_ is there to ensure highway safety and enforce state laws
- ♦ Some highways have a \_\_ strip to warn you if you're going off the road
- ♦ Turn on your lights to be seen better when entering a \_\_
- ♦ Watch for \_\_ in the road and try to avoid them
- ♦ \_\_ form ice before surface roads due to cold air passing under them
- ♦ Share the ride in a \_\_ and you may be able to use special lanes
- ♦ Mountain highways have \_\_ truck ramps for trucks with brake failures
- ♦ Listen to the radio for the \_\_ report to help avoid slow spots
- ♦ Never drive if you have been \_\_ or are very tired
- ♦ Watch for ice in \_\_ weather, and be sure to leave enough room to stop
- ♦ Pulling over at a \_\_ \_\_ will let you stretch you legs and get refreshed
- ♦ Avoid traveling during \_\_ \_\_ in cities if possible
- ♦ Never \_\_ or follow too closely to the car in front of you
- ♦ Carry a cell phone to call for help if your car has a \_\_
- ♦ Pull to the right to allow \_\_ vehicles with flashing lights to pass
- ♦ Usually \_\_ that run north-south are odd-numbered, east-west are even
- ♦ Slow down and pay extra attention when driving in \_\_ zones
- ♦ Always check for crossing traffic at an \_\_ even you have the light



Answer on p. 5



**Business Staffing, Inc.**  
**2505 N. Frazier**  
**Conroe, TX 77303**



## The Suggestion Box

If you are having trouble getting your supervisor to participate in safety or if you have special safety concerns that are not being addressed, write me. We all must do our part to keep you safe and healthy.

