

EDGEWATER FRP DOOR

Commercial Fiberglass Doors & Frames

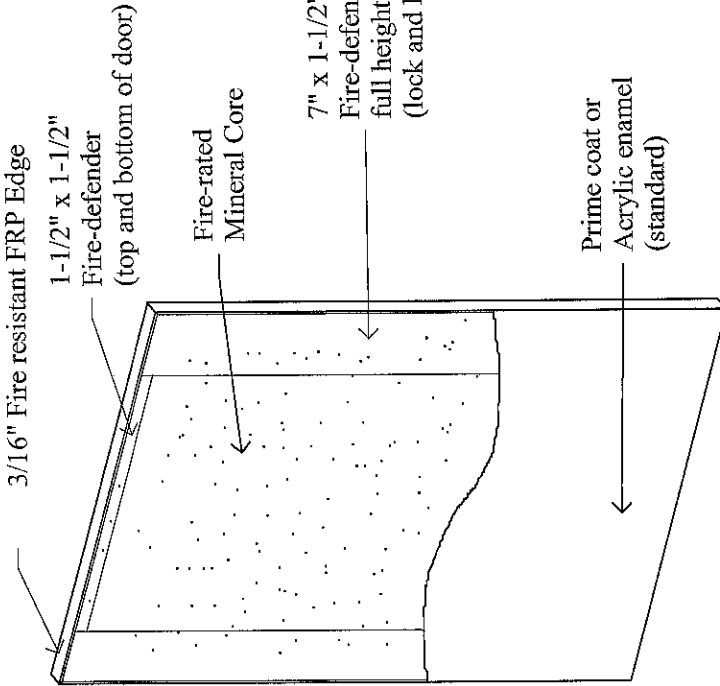
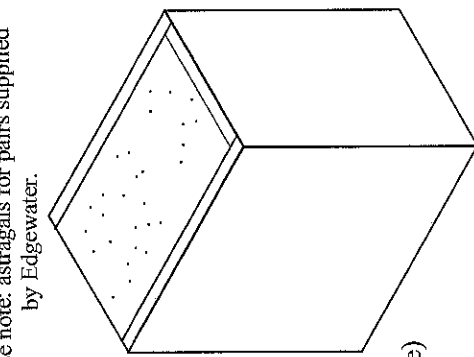
EF Series

45, 60, 90 Minute Fire-rated Door

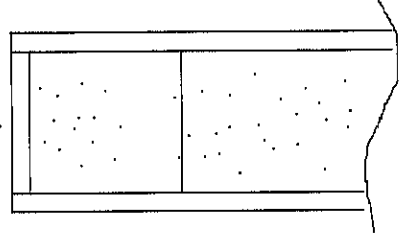
Specifications

Doors shall be EF series Manufactured by Edgewater FRP Door, Neenah, Wisconsin. Doors shall be of full flush construction 1-3/4" in thickness, manufactured utilizing pultruded fiberglass components for flexibility, durability, superior strength and chemical resistance. Laminated composite door faces shall be resin fused to the stile and rail assembly, including the entire surface area of core material, utilizing a fire-resistant adhesive, and then cured under pressure until completely bonded. Both lock and hinge stiles and top and bottom rails of the door shall be filled and ground smooth for a completely sealed construction. Doors shall have a beveled (1/8" in 2") lock edge.

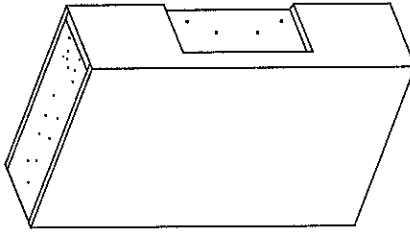
Please note: astragals for pairs supplied by Edgewater.



Hinge & lock stiles
Top & bottom rails
(seamless)



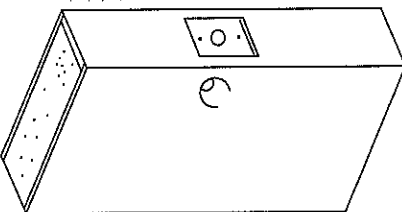
Door hinge Reinforcement



Butt hinge preps Pre-drilled for screws

Fire-Defender (FS) Hinge Reinforcement

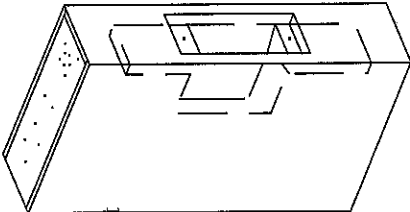
161 Cylindrical Lock reinforcement



Fire-Defender (FS) Lock Reinforcement

40" from floor to centerline of strike (standard)

86 Mortise lock reinforcement



Fire-Defender (FS) Lock Reinforcement

40" from floor to centerline of strike (standard)



Tested in accordance with "Positive Pressure Fire Tests of Door Assemblies" ANSI/UL10C (2nd Edition, 2009) and UBC 7-2 (1997)