

# EDGEWATER FRP DOOR

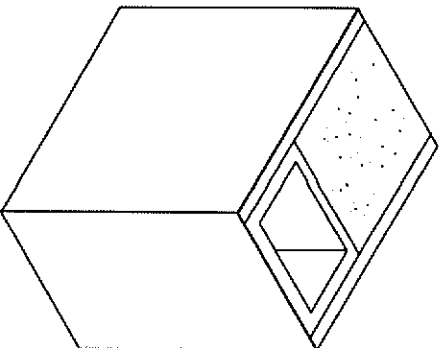
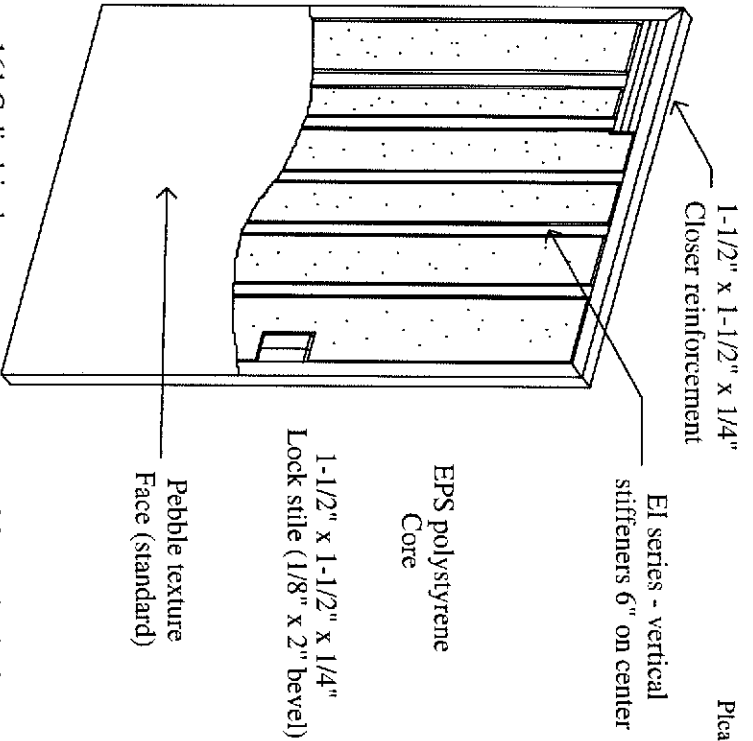
Commercial Fiberglass Doors & Frames

## EI (Insti-lite) Series

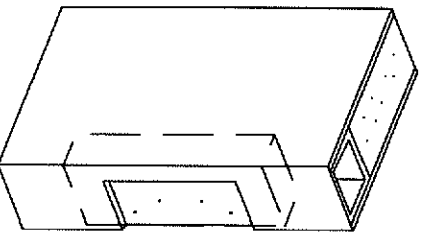
### Specifications

Doors shall be EP series Manufactured by Edgewater FRP Door, Neenah, Wisconsin. Doors shall be of full flush construction 1-3/4" in thickness, manufactured utilizing pultruded fiberglass components for flexibility, durability, superior strength and chemical resistance. Laminated composite door faces shall be urethane fused to the stile and rail assembly, including the vertical stiffeners and surface area of core material, utilizing a two-part 100 percent reactive urethane adhesive, and then cured under pressure until completely bonded. Both lock and hinge stiles and top and bottom rails of the door shall be filled and ground smooth for a completely sealed construction. Doors shall have a beveled (1/8" in 2") lock edge. Frame to be 4-1/2" x 2" tubular aluminum or 5-3/4" x 2" FRP.

Please note: astragals supplied by Edgewater only if noted on order.

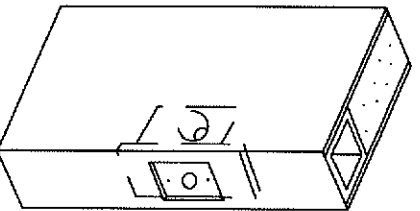


Hinge & lock stiles  
Top & bottom rails  
(seamless)



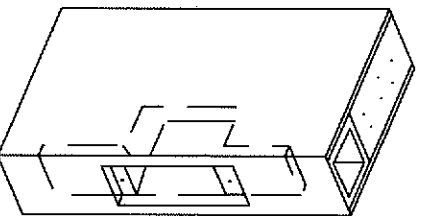
Door hinge  
Reinforcement

Butt hinge  
Pre-drilled  
for screws  
  
High density  
polyethylene  
(HDPE) hinge  
reinforcement



161 Cylindrical  
Lock reinforcement

High density  
polyethylene  
(HDPE) lock  
reinforcement  
  
40" from floor  
to centerline  
of strike (standard)



86 Mortise lock  
reinforcement

High density  
polyethylene  
(HDPE) lock  
reinforcement  
  
40" from floor  
to centerline  
of strike (standard)

Specifically designed for institutional facilities such as: schools, universities, and hospitals.

TRIFAB® VG 450 SHOWN  
(400 & VG 451 SIMILAR)

\* IN DOOR  
PACKAGE

