

EDGEWATER FRP DOOR

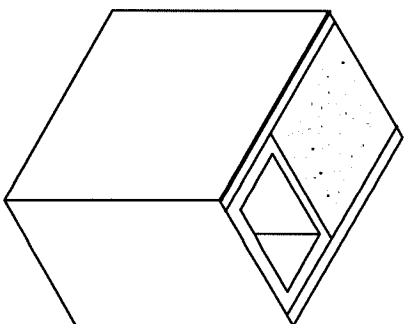
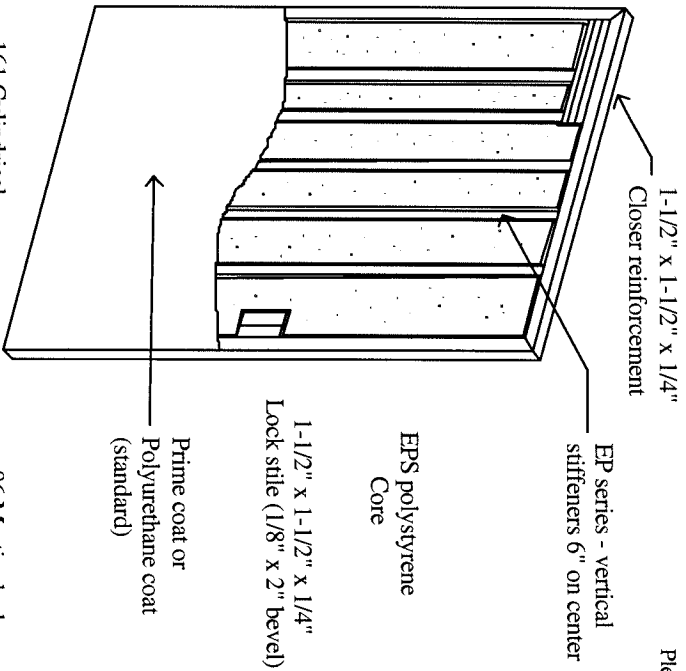
Commercial Fiberglass Doors & Frames

EP (premier) Series

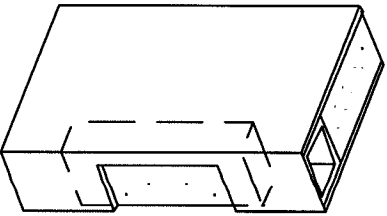
Specifications

Doors shall be EP series Manufactured by Edgewater FRP Door, Neenah, Wisconsin. Doors shall be of full flush construction 1-3/4" in thickness, manufactured utilizing pultruded fiberglass components for flexibility, durability, superior strength and chemical resistance. Laminated composite door faces shall be urethane fused to the stile and rail assembly, including the vertical stiffeners and surface area of core material, utilizing a two-part 100 percent reactive urethane adhesive, and then cured under pressure until completely bonded. Both lock and hinge stiles and top and bottom rails of the door shall be filled and ground smooth for a completely sealed construction. Doors shall have a beveled (1/8" in 2") lock edge.

Please note: astragals supplied by Edgewater only if noted on order.



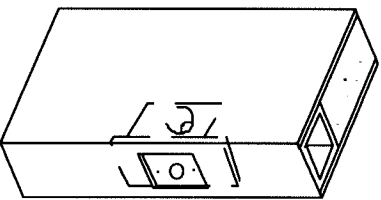
Hinge & lock stiles
Top & bottom rails
(seamless)



Door hinge
Reinforcement

Butt hinge
preps
Pre-drilled
for screws

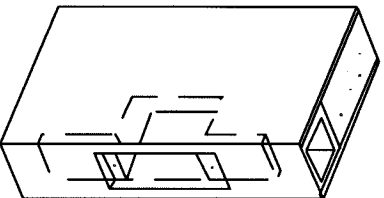
High density
polyethylene
(HDPE) strike
reinforcement



161 Cylindrical
Lock reinforcement

High density
polyethylene
(HDPE) lock
reinforcement

40" from floor
to centerline
of strike (standard)



86 Mortise lock
reinforcement

High density
polyethylene
(HDPE) lock
reinforcement

40" from floor
to centerline
of strike (standard)

