

# EDGEWATER FRP DOOR

Commercial Fiberglass Doors & Frames

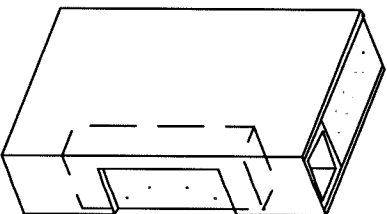
## ES Series

Please note: astragals supplied by Edgewater only if noted on order.

### Specifications

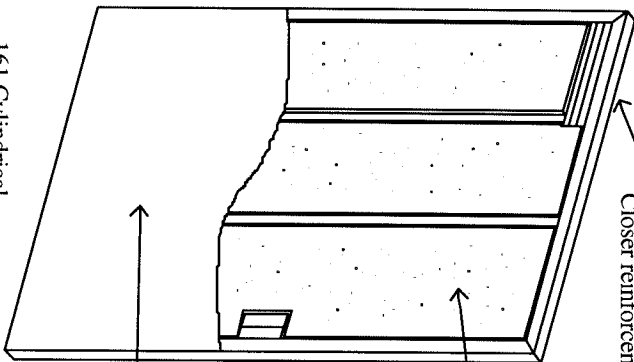
Doors shall be ES series Manufactured by Edgewater FRP Door, Neenah, Wisconsin. Doors shall be of full flush construction 1-3/4" in thickness, manufactured utilizing pultruded fiberglass components for flexibility, durability, superior strength and chemical resistance. Laminated composite door faces shall be urethane fused to the stile and rail assembly, including the vertical stiffeners and surface area of core material, utilizing a two-part 100 percent reactive urethane adhesive, and then cured under pressure until completely bonded. Both lock and hinge stiles and top and bottom rails of the door shall be filled and ground smooth for a completely sealed construction. Doors shall have a beveled (1/8" in 2") lock edge.

### Door hinge Reinforcement



But hinge preps  
Pre-drilled for screws

High density polyethylene (HDPE) strike reinforcement



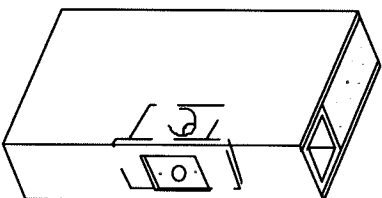
1-1/2" x 1-1/2" x 1/4" Closer reinforcement

1-1/2" x 1-1/2" x 1/4" Lock stile (1/8" x 2" bevel)

EPS polystyrene Core

Prime coat or Polyurethane coat (standard)

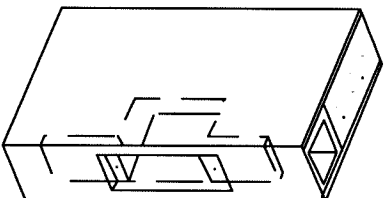
### 161 Cylindrical Lock reinforcement



High density polyethylene (HDPE) lock reinforcement

40" from floor to centerline of strike (standard)

### 86 Mortise lock reinforcement



High density polyethylene (HDPE) lock reinforcement

40" from floor to centerline of strike (standard)

### Hinge & lock stiles Top & bottom rails (seamless)

