



## Building and Grounds Projects

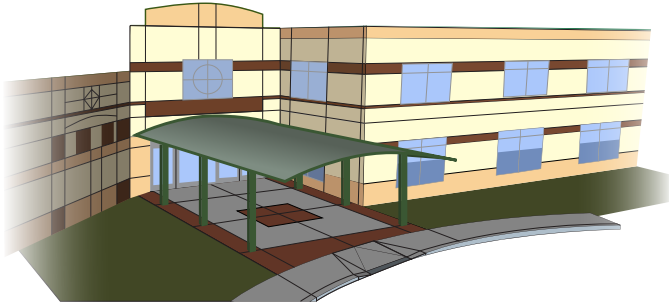
After being a nomadic church, meeting in various schools or office parks for our first 17 years, Shepherd Gate was blessed with a permanent church building on 13 acres of land. Now, after 8 years in our current facility, we are ready to take the next step in God's vision for our building and grounds. This includes five main projects that will provide more space for our ministries to continue growing, as well as more effective use of our wonderful outside space.

Our desire is to realize the vision for ministries that God is birthing in our hearts. Please pray that God will "spark enthusiasm among us" (Haggai 1:14) and "grant us success in this project" (Nehemiah 1:10). Please ask God if you can help with a contribution in any way.

Our goal is to complete our fund-raising campaign during 2011 and to finance all of the projects through the contributions from our church family and friends. You can designate contributions to a specific project on the offering envelope, and our accounting systems will ensure your contribution is earmarked for that project. Or you can simply make a contribution to the building fund if you choose not to designate to a specific project.

If you have any questions or would like to offer support, please contact Tom Nusbaum at 703-961-1040 or [administrator@shepherdgate.org](mailto:administrator@shepherdgate.org)

## Front Entrance Canopy



Have you ever wished you could drop someone off under a nice covering during a heavy rain?

Well, now you can! Early this summer we finished our front entrance canopy project. It included 6X6 steel beams and heavy duty translucent roof panels, along with long-life LED lighting underneath. God met our financial need for this project and the entire \$48,000 cost is paid in full.

## Children's Playground



Shepherd Gate's children's ministry is exploding right before our eyes.

This is an area where God is clearly moving, so we want to emphasize ministries to young families and children. An excellent playground facility is an important part of that emphasis. Our improved playground is completed! It now has beautiful hunter green aluminum fencing with gates, heavy mulching throughout, a new toddler sliding board set, new benches and a picnic table with umbrella. These improvements are paid in full thanks to the generosity of congregational members who share God's vision for our children's ministry at Shepherd Gate.

# Sports fields



**God has blessed us with 13 acres of land for outdoor activities.**

Now it's time to develop some of that space into useable sports fields. To begin, we will set up a soccer field that can easily be divided into smaller playing fields for kids. This will be a great way for our young people to burn energy, and for the church to provide a wholesome recreation option in the community! Our recent research indicates that costs should be approximately \$20,000 for field landscaping and soccer goals.

# Memorial Garden



**Over the years, we've often thought it would be nice to have a place to remember loved ones, right here at Shepherd Gate.**

Soon this dream will become a reality, as we're planning a memorial garden that will be near our church building, handicapped accessible, and beautifully landscaped. It will be a place where people can meditate and pray, baptisms will be held, and loved ones can be memorialized. This project will cost approximately \$50,000. And the great news is that God has already moved to provide significant funding for this project!

# Education Wing

Previously referred to as the “Blue Room,” our vision is to build out this 8,500 square-foot space into a two-level Education Wing.

This will be comprised of classrooms, offices, activity rooms, and a new nursery/crib room space. This will also allow us to use our existing nursery and office space for other purposes, such as a library or an expanded sanctuary. The new offices will allow private meeting space for our staff, particularly when they are holding counseling sessions. The new classrooms will allow us to offer expanded Christian education for all ages. And the activity rooms will provide attractive areas for events such as church luncheons or wedding receptions.

We need to finish the work that God started over 8 years ago. This large construction project will cost roughly \$800,000, or less if we can break it into parts, which we are exploring now. Please pray about how you can help us finish this space.

