



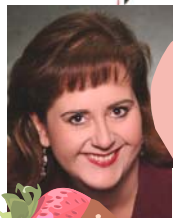
# GRACE NOTES

A Communications Ministry of Grace United Methodist Church

**G**ather  
**t**he  
**G**row  
**O**

Gather to Christ  
Grow as Disciples  
Go to Serve

February 2011



Feb. 25!

## *The Five Friends All Women Need:*

*A Heartwarming Women's Event from the Evangelism Team*



Women, join us Friday, **February 25**, 7:00-9:00 p.m. at Grace, for an event that will warm your heart, featuring a program from author and speaker Allie Pleiter, dessert and coffee. An avid knitter, coffee junkie and chocoholic, Ms. Pleiter has written two parenting books, 12 novels, and has traveled around the country speaking about women's issues, faith and writing. On sale Sundays in the Activity Center and in the church office during the week, tickets are \$10 or \$5 if you bring a friend! There will also be local restaurant coupons available between 5:00-6:00 p.m. before the event so that women can go out to dinner before—a girls' night out! Contact Kim at 630-369-4734 with questions.

## Grace Hunger Committee Felt the Love in 2010

*From the Grace Hunger Team*

Thank you to everyone at Grace who helped stamp out hunger in 2010! Many people helped to feed an average of 175 people per night at Hesed House, including those who organized the making of 240 casseroles, salads, Jello, and dozens upon dozens of cookies; the van driver who picked up food orders each month, including 50 pounds of meat, nine pounds of bologna, 27 pounds of sausage, 20 gallons of milk, 50 loaves of bread,

pancake mix, eggs, condiments, and paper products; and the approximately 25 volunteers who served food and monitored the shelter each month.

Our first-Sunday-of-the-month food collections for 2010 totaled 3,903 pounds of food and over \$6,000 in the Love Loaf, benefiting Common Pantry in Chicago, Aurora Interfaith Pantry at Hesed House and Naperville's Loaves & Fishes.

Seventy-seven walkers raised over \$7,000 for the 2010 CROP Walk in October, 25 percent of which was split between Loaves & Fishes and the Northern Illinois Food Pantry. The remainder went toward global hunger efforts.

At Christmastime, \$5,991 was collected for the Heifer Project, enabling us to purchase an entire ark of animals for families in need, here and around the world! In many ways, one step at a

time, we at Grace are helping to stamp out the global hunger plight. Join our efforts in 2011, beginning with the Souper Bowl of Caring on **February 6** (see page 3). Also, on **March 30** at 2:30 p.m., the Feed My Starving Children facility in Aurora has 30 places reserved for Grace volunteers. Contact Catherine Page at 630-420-8239 to find out more about how *you* can help fight hunger with the Grace Hunger Committee!

## How Is Your Relationship With God?

By Rev. Dr. Carol R Findon, LCPC

Relational theory is founded on the principle that the basic human motivation is to engage in relationships with others. Infants do not thrive without a relationship with a primary caregiver. People need to live in relationship with other people in order to grow and develop.

As we come close to Saint Valentine's Day, let us look at the marks of a growth-fostering relationship, as defined by the late Jean Baker Miller, M.D., of the Stone Center at Wellesley

College: 1) a sense of zest or well-being that comes from connecting with another person(s); 2) the ability and motivation to take action in the relationship as well as in other situations; 3) increased knowledge of oneself and other person(s); 4) an increased sense of worth; 5) a desire for more connections beyond the primary relationship.

February also brings us toward the season of Lent, during which time we are also called to re-examine our connection with God. We can do so by using the five marks defined by Miller. Are

the healthy marks of a good relationship part of your relationship with God as well as with others?

*Let love be genuine; hate what is evil, hold fast to what is good; love one another with mutual affection; outdo one another in showing honor.*

Romans 12:9-10

*Therefore be imitators of God, as beloved children, and live in love, as Christ loved us...*  
Ephesians 5:1-2






## Pastor's Journal

### Intentional Christian Discipleship

To become a disciple, a follower of Jesus, we grow in our Christian discipleship. No matter where we are on our walk with God, God accepts us and, in Christ, stands ready to go further with us. But sometimes, it seems, we need encouragement to set new goals for ourselves.

As we come into Lent this year (the season that precedes Easter), Grace Church will give you the opportunity to make a commitment to increase your Christian discipleship. Wherever we are, just starting out or far along the path toward Christian perfection, we can do better, or do more, or simply find peace for our journey. Grace will provide you with a pledge card—not for money, but for your soul. On it you will commit to one change in your life over the coming year as an intentional step on your walk of faith.

Some will make the commitment to attend worship more often. Some to pray. Some to read their Bible. Some to participate in a mission trip. Some to take the step of inviting another to find Christ. Some to leadership in the Church. Some to leadership in their home. Some to responsibilities in the community. Increasing discipleship can be inwardly directed, that is increasing one's conscious contact with God, or outwardly directed in serving or inviting others. There are as many ways to discipleship as there are people in the church, but all of them come through a commitment to God as a follower of Jesus.

Grace and Peace, 



## CHURCH COUNCIL UPDATE

John Bodine's column will return in next month's *Grace Notes*.

### Grace Library Adds Important New Titles to Collection

By Angela McCurdy


Two new titles have recently been added to the Grace Church library. N.T. Wright's *Simply Christian: Why Christianity Makes Sense* is the resource for the current all-church study. Wright is the former Bishop of Durham and a well-known scholar who has written more than 30 books, including *The Last Word*, *Surprised by Hope*, and *After You Believe*. He is currently Research Professor of New Testament and Early Christianity at the University of St. Andrews. In this work, Wright sets out to "describe what Christianity is all about, both to commend it to those outside the faith and to explain it to those inside...The book isn't 'Anglican,' 'Catholic,' 'Protestant,' or 'Orthodox,' but simply Christian...Being a Christian in today's world is, of course, anything but simple. But there is a time for trying to say, as simply as possible, what it's all about, and this seems to me that sort of a time."

*Why Jesus?*, by William H. Willimon, is the theme for this year's Lenten season. (If you have not already submitted a contribution to the upcoming Lent booklet, I very much encourage you to do so. Further information is available in the church office, from Pastor Lisa, Merrill Litchfield or myself.) Willimon is Resident Bishop of the Birmingham Area of the United Methodist Church and the author of over 50 books, including *Sinning Like a Christian* and *Thank God It's Friday*. He served, with Joel N. Green, as general editor of *The Wesley Study Bible*. He has been ranked along with Billy Graham by a Baylor University survey (1996) as one of the

12 best preachers in the English-speaking world. Here Willimon uses 12 New Testament characterizations (including vagabond, party person, and home wrecker) of Jesus to explore who He is and why we might want to know Him. "Why Jesus? Because he is the most fascinating person in the world."

If you would like to support the purchase of new materials by the Grace Library, you can do so by making a contribution to the church's special library fund. Please indicate "special library fund" on your check and offering envelope. You may deposit these offerings in the church office or in the collection plate in worship.

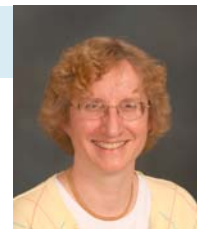
**LEND US YOUR DEVOTIONS—SOON!**



For over 40 years, Grace has published a booklet of daily devotions for the Lenten season written by members of our congregation. This year, our Lenten theme is "Why Jesus?," based on Will Willimon's book of the same title. Jesus has been called by many names throughout the ages and is many things to many people. Please share with us who Jesus is for you, or visit the church office for some guidelines to get you started. Please submit your e-mail contributions (preferably) **ASAP** to Merrill Litchfield at [barmerlitchfield@msn.com](mailto:barmerlitchfield@msn.com) or hard copies to the church office. For hand-written submissions, please do not exceed an 8.5x11 page; for typed submissions, please do not exceed a half page of copy. Contact Merrill Litchfield (630-355-5239), Angela McCurdy (630-579-4626) or Pastor Lisa Telomen (630-355-1748) with questions or for further information.

## Linking Up to Grace

By Pastor Lisa Telomen



“For the ancient Israelite and early Christian, the creation of the world was the free outpouring of God’s powerful love. The one true God made a world that was other than himself, because that is what love delights to do. And having made such a world, he has remained in a close, dynamic, and intimate relationship with it...” (p. 65 *Simply Christian*, by N.T. Wright.)

This year’s all-church study book, *Simply Christian*, is not a quick or easy read for most people. But, for most, it is thought-provoking, and we hope and pray for good thoughts that lead to good faith in action!

N.T. Wright says that he is trying to “describe what

Christianity is all about, both to commend it to those outside the faith, and to explain it to those inside.” He starts by describing four human quests that most people around the world share: a quest for justice, for spirituality, for relationship, and for beauty. These are quests that might help one to be open to the presence of God. For Christians, and even people of the three monotheistic religions, these are quests that lead to questions which are clearly answered by God’s presence, and for the Christian, clearly in Jesus Christ.

We have several classes and study groups reading this book, and my hope is that as we read and discuss together

and share dialogue with Pastor Bob through his sermons, we will be able to identify more clearly for ourselves what it is we believe and why we believe it—how does faith bring meaning to our lives, and how does it shape how we live for the better?

Once we have answers to these questions, we then have a quest: to help others raise the questions and find the answers for themselves – why choose faith, and how will I choose to have it shape my life? As Pastor Bob preached this on January 23, from Romans 10: “How can people hear God’s story if nobody tells them?” Later in Romans 15, Paul writes, “Cultivate your own relationship with

God, but don’t impose it on others ... make your behavior and beliefs coherent, and then lend a hand to those who are faltering...and reach out and welcome one another to God’s glory.”

Let this be our quest, then, for this winter: to be simply Christian, so that others will be curious and interested in our Way and Truth and Life! Then, we can help them discover the God and Christ from whom we learn this direction! May God bless us all as we live this quest.

Peace,

*Rev Lisa E. Telomen*

## Give More By Gifting Securities!



Including assets in gift giving to Grace Church typically allows members to give more than they could with cash outright. If

you wish to make a gift of securities to Grace, here are some ways to do so:

- Securities held by a broker should be delivered via DTC transfer
- Transfer your stock using this information:

Firm: Stifel Nicolaus

DTC: 0793 (continued top right)

FBO: Grace United Methodist Church/Account no. C203 2896-6216

Attn: John Abe, Financial Advisor

- Securities must be registered in your name: we will need a signed stock power and letter of authorization. Please sign your name(s) exactly as it/they appear on the face of the certificate. Please only complete the blanks where indicated. Stock powers can also be obtained by calling the Financial Advisor’s office (312-269-0321)
- Mutual Funds: Many mutual funds

can be transferred to Stifel Nicolaus FBO Grace UMC, provided that Stifel Nicolaus has an agreement with the fund provider to trade that particular fund. To do so, please contact John Abe or Ria Gonzales at Stifel Nicolaus (312-269-0321) to determine if the fund is eligible.

*Please contact Grace Church Financial Secretary Matt Hambright at 630-226-9902 with any questions regarding this information, or pick up a pamphlet bearing the logo you see here outside the church office.*



## Tackle Hunger in the “Souper Bowl” of Caring!

On Sunday, February 6, millions of Americans will tune into the Super Bowl game.

There will be parties with

friendship, fellowship and abundant food in cozy homes. At the same time, there will also be people worrying about staying warm, finding shelter and a warm meal. Please join our Grace youth in a “Souper Bowl” challenge to see who can bring the most canned goods and contribute the most in

donations to the “Souper Bowl of Caring”—Youth vs. the Congregation! Bring your canned goods to the back of the Sanctuary on February 6, marked either “youth” or “congregation.” Our youth will also be collecting your monetary donations that day. The “Souper Bowl” is a simple, yet very significant, way to care for others. Even if the Bears aren’t in the Super Bowl this year, the “Souper Bowl” can still be a great success when we all team together to tackle hunger!

## Coming March 12 From Canada: *Musica Intima!*

On Saturday, **March 12, 7:30 p.m.**, the Grace Concert Series brings yet another musical treat to the Grace Sanctuary, this time from Canada! “Musica Intima” is a 12-voice ensemble internationally renowned for their warm, engaging stage presence, impeccable musicianship, and unique perspective on ensemble singing. “What makes Musica Intima truly unique,” says Vancouver’s Georgia Straight, “is that the singers rehearse and perform without a conductor.” But, according to David Vernier (ClassicsToday.com), “Their huge dynamic range and precise attention to details make it hard to believe there isn’t a conductor off-stage somewhere pulling the strings.”

Founded in 1992, Musica Intima has become an integral part of Vancouver’s cultural fabric, collaborating regularly with other local arts organizations. The ensemble routinely commissions and premieres works by Canada’s leading composers, including

Jose Evangelista, Peter Hannan, and others. They have performed at some of Canada’s best known festivals and concert halls. Musica Intima has released five recordings, sharing their powerful harmonies and perfectly blended voices with the world! Here are what more critics are saying about this exciting group from north of the border:

*“...Musica Intima’s uninhibited, natural sound, superb choral discipline, and extraordinary varied program is a joy to hear!”*

*“The power of these 12 fresh, tuned and perfectly blended voices (despite the absence of a conductor!) remind one of an organ resonating in the silence of a church.”*

*“These singers make eye contact with their audience, creating an achingly intimate, holy moment in each performance...judge for yourself; this description isn’t hyperbole!”*



### Tickets:

**General Admission \$20**

**Seniors 65+ \$15**

**Students \$10**

**Artists’ Circle reserved seating \$30 (up front and center)**

Available for purchase in the church office or online at [www.peopleofgrace.org/concerts](http://www.peopleofgrace.org/concerts). Contact Dan Wagner at [andante147@gmail.com](mailto:andante147@gmail.com) or 630-355-1748, ext. 232 for more information.

**STAND AND SHOUT**  
Praise & Worship for Contemporary Choir

**Presented Feb. 27 by the Grace Youth Chorale 6:30pm in the Sanctuary**  
**As part of the T’Shuva youth-led worship service**

Created by **DENNIS & NAN ALLEN**

Featuring the songs of Paul Ibbotson, Lincoln Brewster, Brenton Brown, Steven Curtis Chapman, Casting Crowns, Travis Cottrell, Jaime Jungocharian, 33 Miles, Rauben Morgan & Matthew West

## Grace Singers: Join In a Naperville United Methodist Massed Choir Lenten Service March 23

Join together with other United Methodist churches for a very special Lenten service on Wednesday, **March 23, 7:30 p.m.**, in the beautiful Wentz Hall in downtown Naperville. A community-wide choir will be part of this service, and we would love to have as many Grace singers be part of the massed choir as possible. All singers aged high school and above are welcome, whether you’re involved in an established choir at Grace or not.



Singers can pre-register to sing online at [www.peopleofgrace.org](http://www.peopleofgrace.org). Music will be available for pickup on Sunday, February 27, and there will be one recommended rehearsal with the Chancel Choir and Dan Wagner in the Grace Sanctuary on Thursday, March 17, 7:00-7:45 p.m. There will also be a mandatory combined choir rehearsal, 6:00 p.m. at Wentz Hall. All participating congregations will be allotted 200 tickets each for those who wish to attend the services. Singers in the massed choir will NOT need tickets! Contact Dan Wagner at 630-355-1748, ext. 232, or [andante147@gmail.com](mailto:andante147@gmail.com) with questions or for further information.

## Animal Attraction!

Send us your animal photos! Every month, we'll feature a photo of your pet (or a friend's, family member's, etc.) or animal shot taken by you or someone you know (no internet downloads or otherwise "anonymous" animal photos, please). E-mail them to [gumnotes@peopleofgrace.org](mailto:gumnotes@peopleofgrace.org) or drop them in the church office, ATTN: Barb, to be scanned (originals will be returned to the owner upon request). Please include your name, the animal's name, and anything you'd like us to know about the animal or photo. Photos are published in the order received.

Maggie



This is Maggie, the Randa family's Golden Retriever, who will be seven years old in March. Maggie is a pet therapy dog at local nursing homes and retirement centers and has joined Nancy on several of her Grace home visits. Maggie loves the special petting attention she receives on these visits. For exercise, Maggie enjoys her neighborhood walks, and when she can't get out due to bad weather, she hops on the treadmill! We should all be so disciplined!

## Send Us Your Animal Photos!

After Maggie (above), we've run out of featured pets! Please send us photos and descriptions of your dogs, cats, birds, hamsters, potbelly pigs, horses, etc., or an animal you snapped (no internet downloads, please!) that caught your eye. Let's keep this fun column going! We know you animal lovers are out there!



See submission details above.

## OUR PEOPLE

### *Sympathy to the Friends and Family of...*

**Betsy L. George Abrahamson**, mother of Suzanne Compton  
**Audrey Browne**, mother of Marcia Dodge  
**Ann Davis**, sister of John Harvard  
**Miriam Fry**  
**Diane Goudriaan**  
**Amber Haake**, former PDO employee  
**JoAnn Rambow**, sister of Jan Frank  
**Kimberly Welborn**, daughter of Scott and Cindy Welborn  
**George Wilson**, father of Beth Pacanowski

### *Celebrations and Congratulations*

**Glenna Holloway** was awarded the 2010 Illinois Senior Poet Laureate Award in the 18th Annual National Senior Poets Laureate Poetry Competition for American poets age 50 and older. She won with her poem "The Hunger Moon"  
**Catherine Langford** celebrates her 98th birthday on February 20. As was noted in last month's *Grace Notes*, Catherine is confined to her bed and would love to receive visits and greetings; her address is Westbury Care Center, 1800 Robin Lane #204, Lisle, IL 60532  
**Sherry Schmidt** became engaged to Joe Noorlag on January 22

### *Baptisms*

**Nicole Lyn Bloch** was baptized on January 23

### *Letters*

Dear People of Grace,

*Judy Grobe, who is battling cancer, recently received encouraging PET scan results and has appreciated so much being on our prayer list. She believes that her good results are due to all the wonderful people who have been praying for her.*

—Neva Nelson

### *Welcome, New Members!*

Names listed in **bold** indicate new members of Grace

Eric and **Nicole (Nikki) Bloch**

**Jennifer Hoover**

**Jacob and Christina Kitchel** and daughter Addison

**Mike Doman and Tara Jackson**

Justin and **Debbie Enlow**

**Bruce Zink and Martha Sanders**

**Matt and Molly Seago** and children Bridget and Benjamin



## Thank You From Chicago's Common Pantry (January 2010)

Dear Grace Church:

*Thank you for another wonderful collection for the pantry. It came in at 344 pounds of food and personal items. Thank you very much for your continued support. It keeps our shelves full of options for our clients each and every week.*



## Grace Foundation Offers NCC Scholarship

The Grace Foundation is pleased to announce that, again this year, it is offering a \$1,000 scholarship to a full-time North Central College student. This opportunity, given by Anna Stephenson, is one of many Foundation endowments and indicates a generosity of spirit that endures long after Anna's death. The Foundation is pleased to have honored a Grace North Central College student with this scholarship for the past several years. Application guidelines are available now in the church office. Applications must be returned by February 15, 2011. Please contact Merle Clewett (630-858-7686) or Bob Poland (630-355-1748, ext. 250) with questions or for further information.

## College/Young Adult Sunday School Class Begins at Grace!

A new college/young adult Sunday School class begins on **February 6, 9:30 a.m.**, in Room 226. Our purpose is to come together as a community of believers and discover what it looks like to live as Christians in our world. Facilitators include Josh and Christine Freeman, Ken and Paul Helberg, Cathy and Caleb Henderson, and Kathy Michaels. This class will be in place of the college group that has been meeting on and off for the past few years at the Freeman's. As a group, we will also be getting together once a month outside of Sunday morning for a service project or fun event. Suggestions and ideas are always welcome! Please tell your friends—see you on February 6! Contact Christine Freeman at 630-416-8810 with any questions.

## Looking Ahead to Lent...

Lent this year begins with Ash Wednesday on March 9 through Easter Sunday, April 24. While plans are still taking shape for this year's Lenten season, here is a look at what's to come. Please note: there will be NO Wednesday night Lenten dinners this year, as the past few years have indicated a diminishing response to our traditional Wednesdays of Lent. Our Lenten theme this year is "Why Jesus?," based on Will Willimon's book (please see page 2 for more information regarding our theme this year). Here are the dates and plans thus far, so that you can get an idea what the Lent season will look like at Grace:

- Wed., **March 9:** Ash Wednesday Worship, 7:30 p.m.
- Sun., **March 13:** Youth-led com-

munity dialogue on "Three Faiths, One God"

- Sun., **March 20:** Children and Family Event on the Sacraments, 11:00 a.m.
- Wed., **March 23:** United Methodist Massed Choir Service, 7:30 p.m. at Wentz Hall (see page 4)
- Wed., **March 30:** Hunger Team leads us in Lenten service at Feed My Starving Children facility during spring break
- Sat., **April 9:** Supper, slides and talk with Hope UMC Pastor Vladimir Ilyukin (Volgograd, Russia), 6:00 p.m.
- Sun., **April 10:** Noon luncheon and program from the Grace Church Foundation, highlighting end-of-life planning
- Sun., **April 17:** Palm Sunday; 11:00

a.m. children and family event: Resurrection Eggs

- Sat., **April 23:** Prayer vigil at Grace (in concert with friends in Russia and Kenya), 8:00 a.m.-5:00 p.m.; 5:00 p.m. Easter service on Saturday
- Sunday, **April 24:** Easter Sunday; 6:00 a.m. sunrise worship, followed by breakfast and worship at 8:15, 9:30, 11:00 a.m.
- **TBD:** "Why Jesus?" dialogue with Pastors Don Niswonger and Bill Bryan

Still needed are writers, poets, artists, photographers for our 2011 Lenten devotions booklet! Please see page 2 for guidelines and submission details.



## New Time, Some Renewing Experience!

Beginning on January 1, our Saturday Evening Circle of Worship adopted a new start time of **5:00 p.m.**, rather than its previous time of 5:30 p.m. Saturday Evening Worship offers Grace families a unique opportunity to end their busy week focusing on God as well as an alternative to Sunday morning services. Saturday Evening Worship meets in an informal, circular format in the Activity Center, offering weekly communion, a monthly healing service, original music from singer/songwriter/worship leader Vickie Wagner, and inspiring messages from Pastor Bob Atkins. If you have never attended Saturday Evening Worship, a new year is a great time to come see what it's all about! If you have questions regarding Saturday Evening Worship, please feel free to contact Pastor Bob Atkins (630-355-1748, ext. 230) or Vickie Wagner (630-260-8766; vickiesong@aol.com).

# Do You Have a SUCCESS Story?

Grace Notes would like to publish more success stories from members of our congregation like the one featured last month about Lori Fahs and her dramatic weight loss. These stories do not have to be about physical changes! A "success story" is defined as any major, positive change in one's life, particularly one that involved reliance on God. Please send your stories to Barb Ceruti at gumcnotes@peopleofgrace.org, or call 630-355-1748. Tell us your story!

## B-I-N-G-O!

Come join Over 50 Fellowship on Thursday, **February 10**, beginning with delicious lunch at noon in Fellowship Hall. After lunch, we'll play a few fun games of Bingo for some "white elephant" rewards! Lunch costs \$6 per person, payable at the door, and no reservations will be accepted after Tuesday, February 8, at noon. Please reserve in the church office (630-355-1748).

## Open Doors Ministry "Meet and Greet" February 13

Grace's Open Doors Ministry will host an informal "meet and greet" session on Sunday, **February 13**, 11:00 a.m. in Room 233, for those who would like to learn more about how this ministry serves the spiritual, educational, and social needs of children and young people at Grace with physical, mental and other special needs. Contact Mark and Laurel Fleming for further information (630-983-6624).

## Sock It To Hesed House!



Grace's 4th grade Sunday School class is collecting new, warm socks of all sizes for patrons of Hesed House. Please deposit socks in the bins at the Welcome Table (narthex), the Activity Center, and Fellowship Hall by **February 13**, when they will be delivered to Hesed House.

## Summer Youth Missions Silent Auction Needs Items

On Saturday/Sunday, **March 5 and 6**, Youth Ministry will hold a Spaghetti Dinner (March 5 only) and Silent Auction. While this is a fundraiser for youth summer missions, you don't have to attend a trip to provide auction items. Do you have a summer cottage you could donate for a weekend getaway? How about professional tickets for a game or two? Perhaps you're an artist, photographer, or you have a service you could provide (child care, handiwork). All of these things make great silent auction items! Items are being accepted now in the youth office. Contact Gaye Lynn Loufek (rglbhl@aol.com or 630-355-1748, x 234).

# silent AUCTION

## Do You Have a Warm, Friendly Smile?

The Grace Welcome Table needs you! Grace is organizing teams of two to serve at the Welcome Table in the narthex on Sunday mornings, from 9:00-9:30 a.m. and again from 10:30-11:00 a.m. Currently, we are in need of teams for the second and fourth Sundays of the month as well as subs to help when regular team members are away. The welcome teams serve to greet visitors, offer directions, and provide general information. If you would like to volunteer, please contact Judi Poland (630-357-6380) or Debbie Enlow (630-346-4779).

## Need Work Done? Have Skills to Offer?



Check out the Grace employment board on the wall across from the Activity Center. With an area for "Situation Wanted"

(skills available) and "Help Wanted" (jobs available), you can post notice of your job needs as well as any skills or services you have to offer. Please list your contact information, as this board is operated by the posting individuals themselves, not the church office or any Grace committee or staff person. Contact Pastor Lisa Telomen with any questions (630-355-1748, ext. 226).



## How Does Catholicism Compare to Methodism?



A series of discussion sessions comparing the Roman Catholic and United Methodist Churches will be held at Grace on five consecutive

Sunday mornings: **March 6, 13, 20, 27, and April 3**, 11:00 a.m.-12:00 p.m., in Room 233. These great Christian traditions have much in common, and yet different understandings of these faiths often cause difficulty for us. Though anyone who has interest will be welcomed, similar sessions held in prior years have been especially helpful to those who are have married across traditional faith lines or who have family members who have done so.

## Spring Men's Forum

On January 21, Fellowship of Christian men kicked off a new year with a nicely attended Winter Forum, focusing on former Indianapolis Colts Coach Tony Dungy's inspiring new book *Uncommon*. Join us again on Friday, **April 15**, for our Spring Forum, when we'll concentrate on the last four sessions of this book. All men of Grace and the community are invited. If you weren't at the first forum, you are especially encouraged to come to the second!

News deadline for March Grace Notes: **Monday, Feb. 21**

Submit news to gumcnotes@peopleofgrace.org or call 630-355-1748, ext. 240

**Grace United Methodist Church**  
300 E. Gartner Rd.,  
Naperville, IL 60540  
630-355-1748  
www.peopleofgrace.org



**Grace United Methodist Church**  
**300 E. Gartner Rd.**  
**Naperville, IL 60540-7424**

Non-profit Organization  
U.S. POSTAGE PAID  
NAPERVILLE, IL  
PERMIT NO. 75

**ARE YOU AN EARLY RISER?**

**Hesed House needs breakfast servers 5:00-7:00am on  
February 9 and/or March 9**

**Please contact Bob Owensby at  
630-416-4513 if you would like to  
help or find out more.**