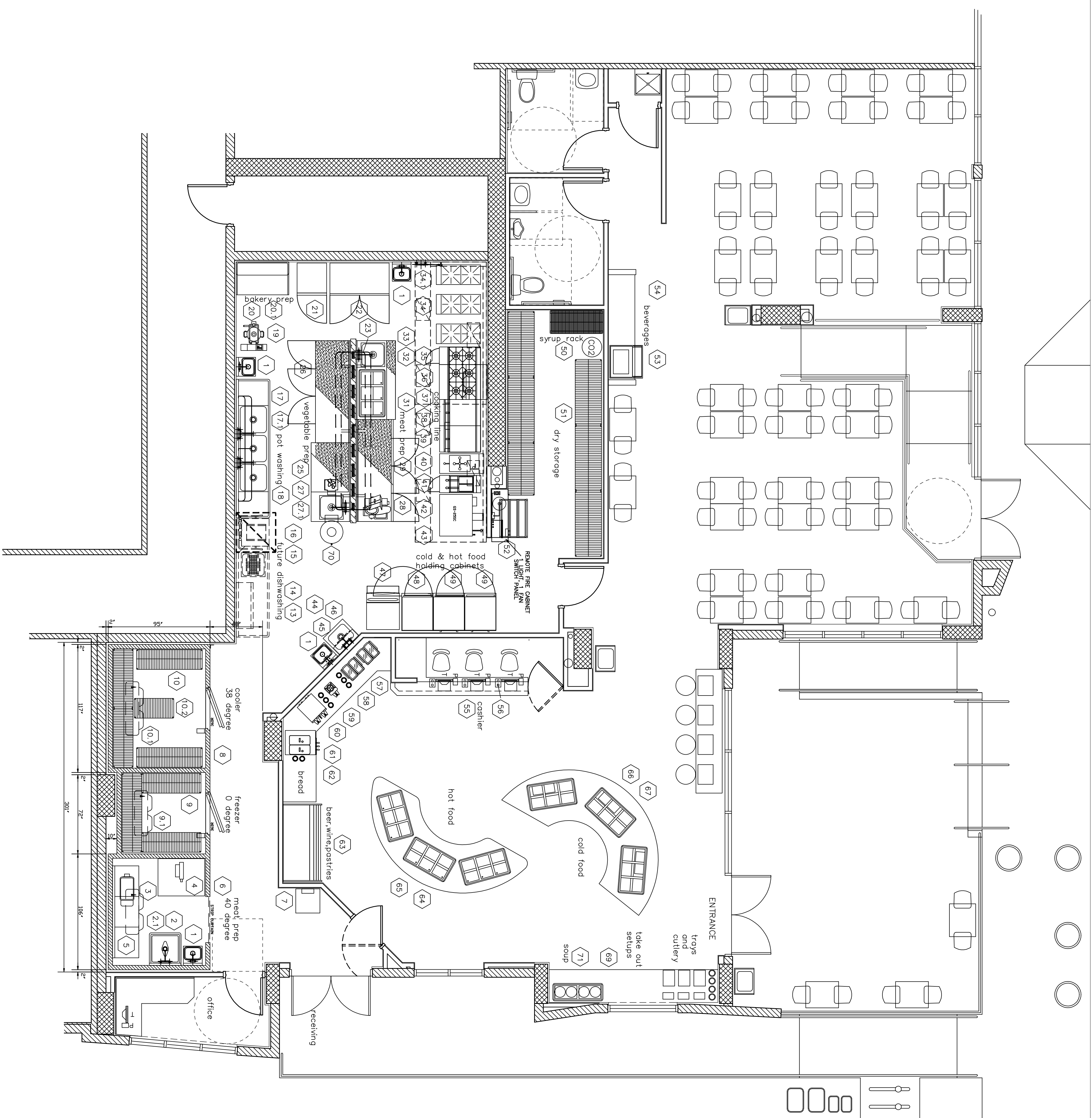


EQUIPMENT SCHEDULE

ITEM NO	QTY	EQUIPMENT CATEGORY
1	1	SINK, HAND, WALL MOUNT
1	3	SINK, HAND, WALL MOUNT
2	1	SINK, ECONOMY
2.1	1	FAUCET, WALL MOUNT
3	1	GRINDER, MEAT
4	1	SAW, MEAT
5	1	TABLE, CHOPPING
6	1	36" STRIP CURTAIN
7	1	ELECTRONIC SCALE, RECEIVING
8	1	WALK-IN COOLER/FREEZER/CARBAGE
9	2	SHELVING, WIRE
9.1	1	SHELVING, WIRE
10	2	SHELVING, WIRE
10.1	2	SHELVING, WIRE
10.2	1	SHELVING, WIRE
13	1	RACK SHELF
14	1	DISHTABLE, STRAIGHT
15	1	WAREWASHER, DOOR TYPE, HIGH TEMP
16	1	CONDENSATE HOOD
17	1	SINK, SULLERY, 3 COMPARTMENTS
17.1	1	FAUCET, WALL MOUNT
18	1	POT RACK, WALL MOUNT
19	1	CUTTER/MIXER, VERTICAL
20	1	SHELF, WALL MOUNT
20.1	1	TABLE, BAKERS
21	1	REFRIGERATOR, REACH-IN
22	1	FREEZER, REACH-IN
23	1	POT RACKW/ 15" X 144" CANTILEVERD SHELF BOTH SIDES
25	1	CUTTER, VEGETABLE
26	1	REFRIGERATOR, UNDERCOUNTER
27	1	TABLE, WORK
27.1	1	FAUCET, DECK MOUNT
28	1	SLICER, FOOD
29	1	REFRIGERATOR, UNDERCOUNTER
31	1	DROP-IN, HOT WELLS
32	1	TABLE, WORK
33	1	FAUCET, DECK MOUNT
34	3	STOCK POT RANGE W/ JET BURNERS
34.1	1	WALL SPLASH MOUNT, POT FILLER HOSE UNIT
35	1	RANGE, HEAVY DUTY, GAS
36	1	RANGE, HEAVY DUTY, GAS
37	1	SALAMANDER BROILER, GAS
38	1	STAND, EQUIPMENT
39	2	GRILL, HEAVY DUTY, GAS
40	1	FRYER, PRESSURE GAS W/ FILTER
41	1	FRYER, DEEP FAT, GAS W/FILTER
42	1	OVEN, CONVECTION, GAS W/ WATER INJECTION
43	1	EXHAUST HOOD W/ MUA
44	1	FAUCET, UTILITY
45	1	SINK, MOP
46	1	SHELVING, WALL MOUNTED
47	1	ICE MAKER W/ BIN
48	1	CABINET, MOBILE, REFRIGERATED
49	2	CABINET, MOBILE, WARMING & HOLDING
50	1	RACK, SYRUP TANK & BAG-N-BOX
51	6	SHELVING, WIRE
52	1	RACK, CAN
53	1	DISPENSER, ICE/BEVERAGE
54	1	BEVERAGE COUNTER
55	1	CASHER COUNTER
56	3	DROP-IN, CUP DISPENSER
57	6	DROP-IN, CUP DISPENSER
58	2	DISPENSER, BEVERAGE/NON-CARBONATED
59	1	COFFEE SERVER, ACCESSORY
60	1	COFFEE MAKER, SATELLITE SYSTEM
61	1	DISPENSER, SOFT SERVE
62	1	BEVERAGE & DESSERT COUNTER
63	1	REFRIGERATOR, AIR CURTAIN TYPE
64	1	COLD FOOD COUNTER
65	3	DROP-IN, HOT WELLS
66	1	COLD FOOD COUNTER
67	1	DROP-IN, COLD PAN
69	1	TRAY START AND TAKE OUT COUNTER
70	1	PEELER, POTATO/VEGETABLE
71	1	DROP-IN, HOT WELLS



COMMERCIAL KITCHEN PLANNERS

PROFESSIONAL KITCHEN PLANNING
 FOR OVER 30 YEARS
 Phone: 954-600-0234 Fax: 954-345-7186
 www.cjplanners.com

DADINO EXPRESS RESTAURANTE
 AVENTURA FLORIDA

FOOD SERVICE EQUIPMENT PLAN

DATE: 06/22/2007
 SCALE: 1/4"=1'-0"
 REVISIONS:

K-1