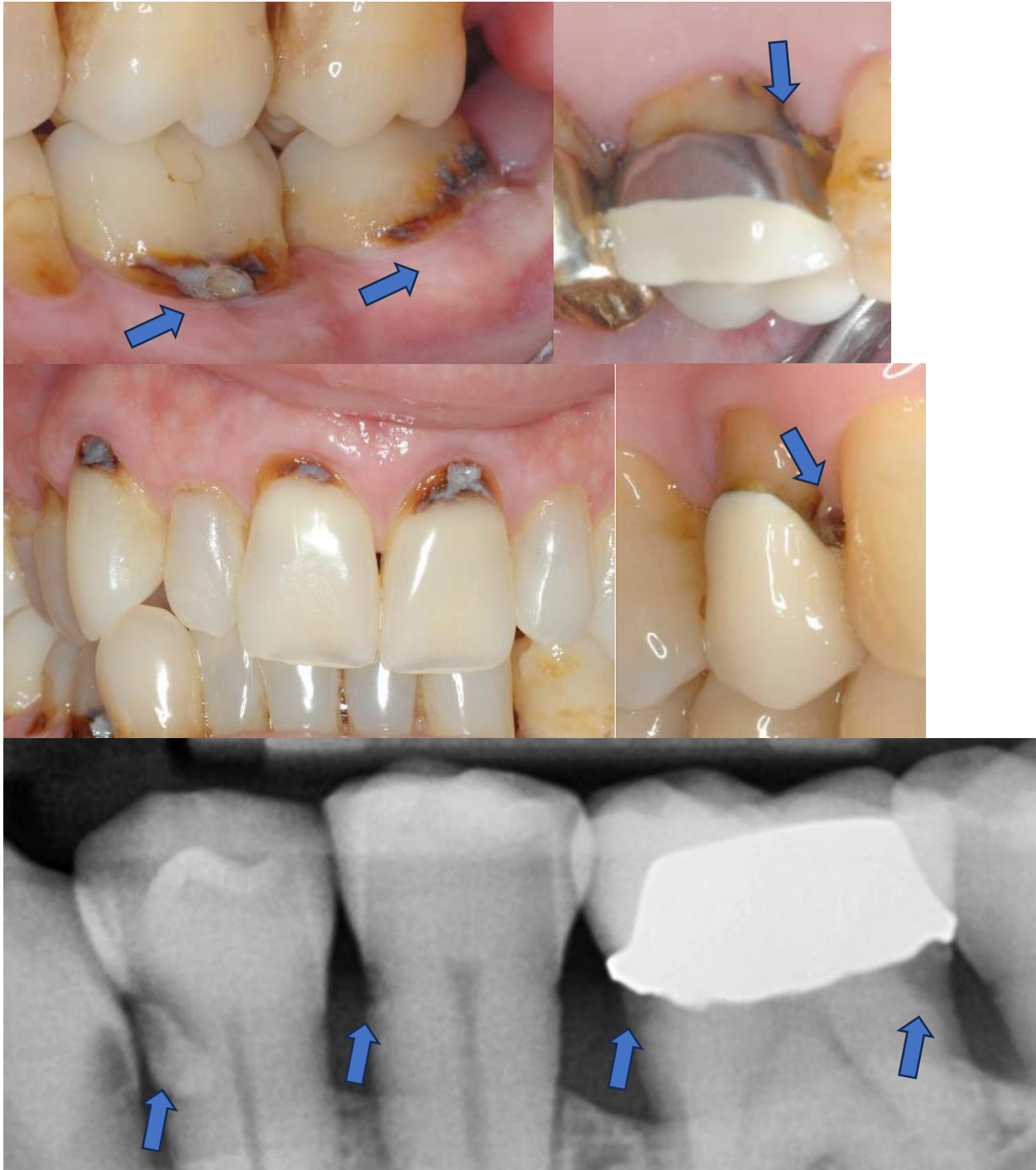


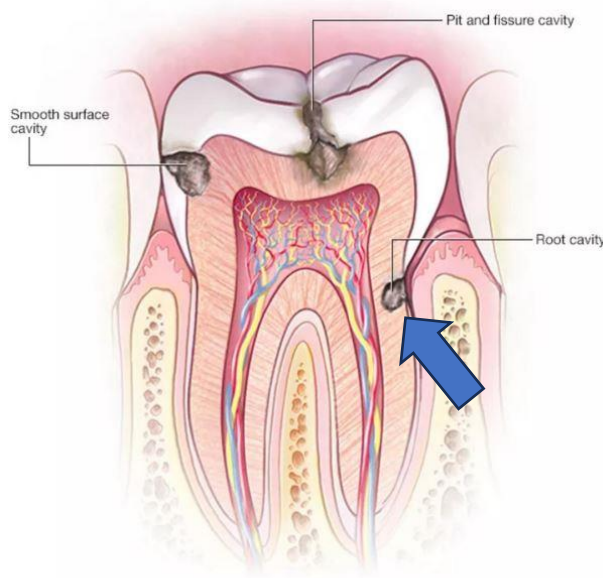
Greg Tarantola DDS

Components Of The Holistic Approach To Dentistry

The Dangers of Root Surface Cavities



Root surface cavities are the most difficult problem to deal with. The cavity is on the root where there is no enamel (it's called cementum) so



Root surface cavities are close to the living pulp

our restorative materials don't bond as well since enamel is needed. The cavity extends below the gum level making access and isolation difficult. It is on the narrow, concave part of the tooth where the outside surface is closest to the living pulp increasing pulpal trauma. See the blue arrow to the left. On molars, the cavity can extend into the notch of the roots where access is even more difficult. And often these root surface cavities are beyond the margin of the crown and onto the

root making treatment even more risky. Teeth with crowns have already had aggressive treatment so treating cavities beyond the crowns onto the root may push the living pulp "over the edge". Trying to do a filling at the edge of a crown almost never works long-term. If direct bonded composite restorations are done, they most likely will need to be redone. If the tooth does not have a crown, many dentists would say you must get a crown...well even worse! As mentioned, you now have the edge of the crown on the root where it is even more difficult to clean. The problems go on and on and many times the tooth needs to be extracted.

So the goal obviously is to prevent root cavities from ever happening. Meticulous oral care, remineralization, and protection with Risewell and BioRepair Advanced Nighttime are essential – See the "Daily Oral Care Sequence" on the website or by clicking [HERE](#). For the gumline cavities, we emphasize the use of the WaterPick with ozonated water - direct the WaterPick tip directly at the cavity. You can also use the ozone gas directly on the cavity – remove the bubbler from the tubing and place the end of the tube tightly against the cavity and hold that

position for 60 seconds. Try not to breath the gas. The SulcaBrush can get into the hard-to-reach areas better and the ProxaBrush or SoftPick for in between. If the prognosis of restorations is poor, we may try the remineralization and protection protocol to see if it can be stopped or even reversed. I have seen success with that approach.

Many advances are being made in the area stopping, healing and even reversing cavities with natural, chemical-free products:

- Nano-hydroxyapatite - (smaller molecule size than regular hydroxyapatite) to remineralize and refurbish tooth enamel.
- Theobromine – contains natural Rennou derived from Cacao. In the presence of calcium and phosphate, it forms hydroxyapatite crystallites of an increased size that strengthen the enamel, making it less susceptible to acid attack, which eventually leads to cavitation
- Nano-silver – smaller microscopic size compared to regular colloidal silver. Neutralizes acids and kills cavity causing bacteria.
- Fermented cod liver oil and butter oil – an excellent source of fat soluble vitamins – essential for optimal remineralization.

See these excellent products by [CLICKING HERE](#)