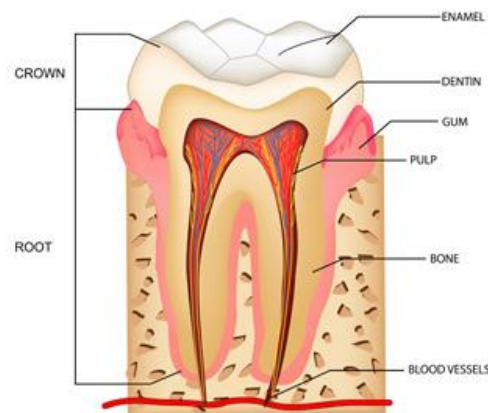
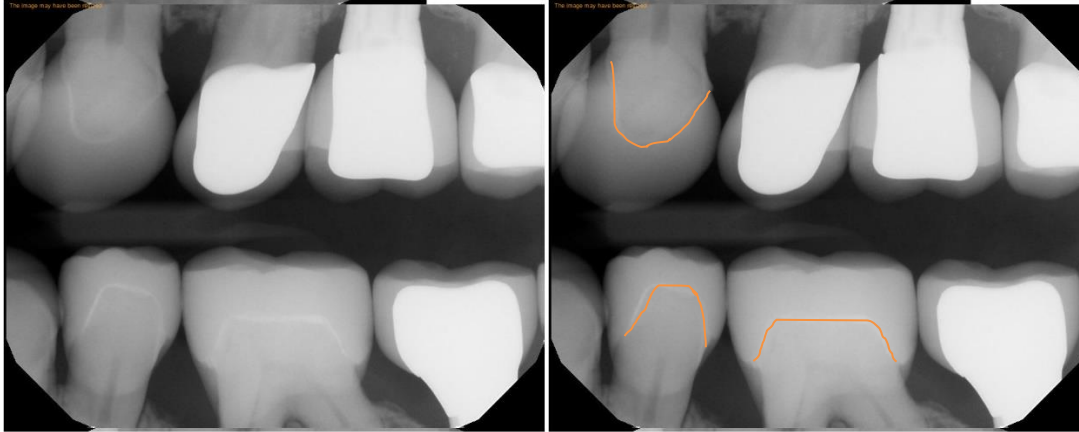


Greg Tarantola DDS

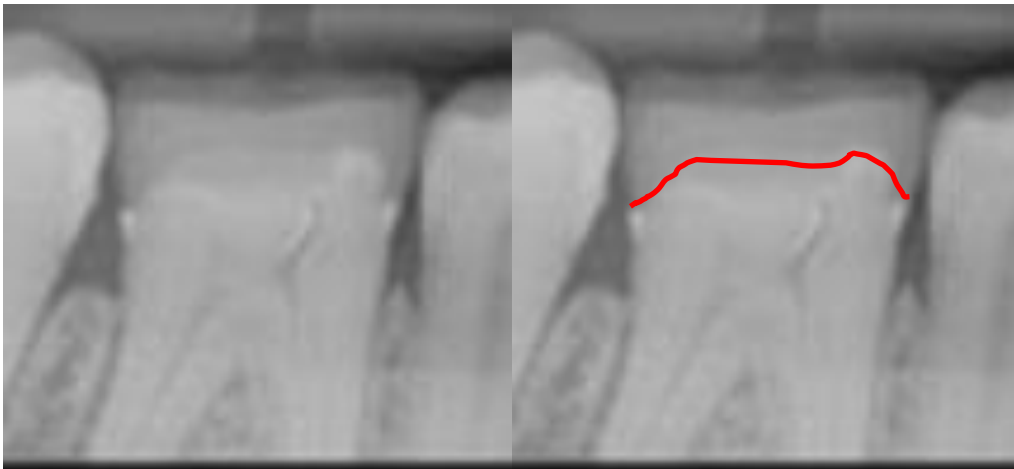
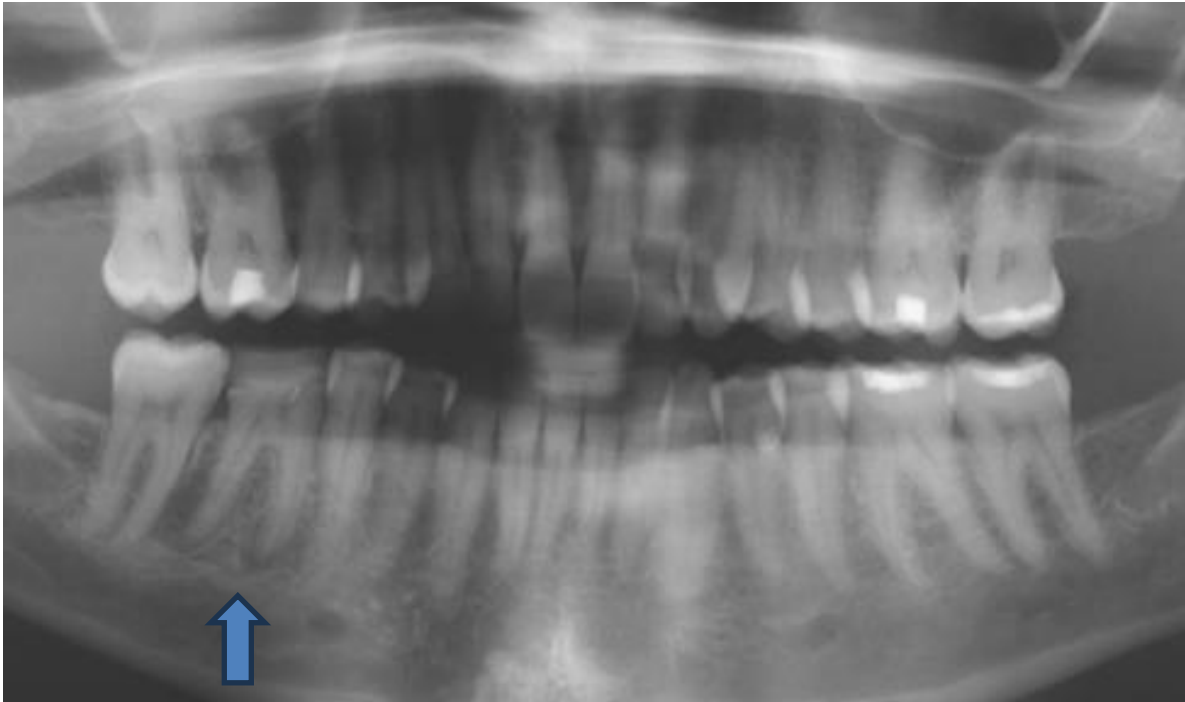
Components Of The Holistic Approach To Dentistry

SAY NO TO CROWNS!!



Crowns can be very aggressive treatment for a tooth because the entire circumference of the tooth needs to be ground away all the way to the gumline. This can be very traumatic to the living pulp of the tooth. As you get closer to the gumline, the contour of the tooth tapers in so you are even closer to the pulp in these areas. In the xray above, look how much of the tooth was ground away! Dentists like doing crowns because you can grind away all this tooth structure very quickly and steps can be delegated to a staff member so the dentist can see more patients. Most bad tooth problems that I have seen in my career have been crowned teeth. The trauma can kill the pulp, then you need a root canal – and all the controversies they have – or an extraction. You can get cavities at the crown/tooth junction and may need a new crown – more trauma...and on and on.

Sometimes teeth do need crowns – but most of the time, if the outer and inner surfaces are intact, a much more conservation restoration can be done...IF the dentist is willing to take the time to pay attention to all the details that are required when doing direct bonded composite restorations or porcelain onlays.



Another example of proof – the only crown in the mouth – all the others are just small fillings – and the tooth is now badly infected and needs to be extracted. And look how much of the tooth was ground away to do the crown!

Here's an example of teeth that really do need crowns. But I see this as the exception rather than the rule. Usually, the teeth can be restored with onlays.



The outer surfaces have cavities at the gumline – but not under the gumline. Because of this, onlays can't be done.



The inner surfaces have cavities and demineralization at the gumline – but not under the gumline...not as bad as the outer surfaces.



The top chewing surfaces are broken, have enamel cracks and leakage under the large silver/mercury fillings which are very deep – but the pulps are still healthy. And to keep the tooth preparation at a minimum, lab processed zirconia crowns are done because they are incredibly strong yet thin.

