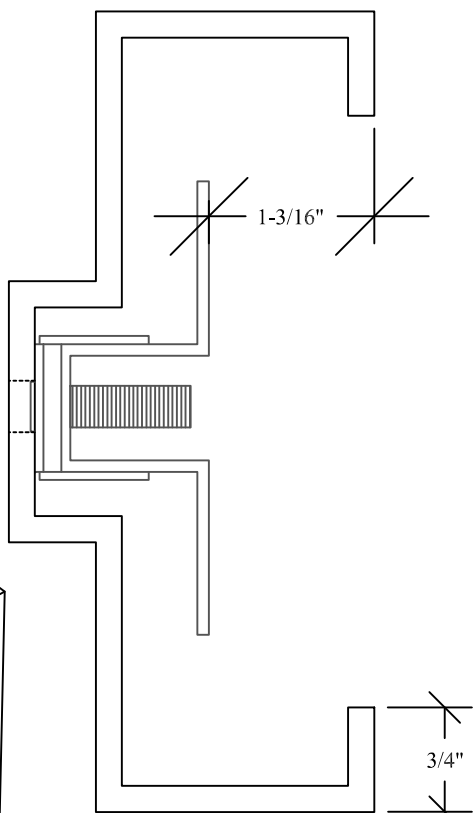
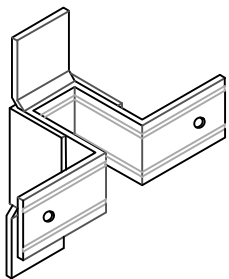


*Please note for 5-3/4" jamb depth:

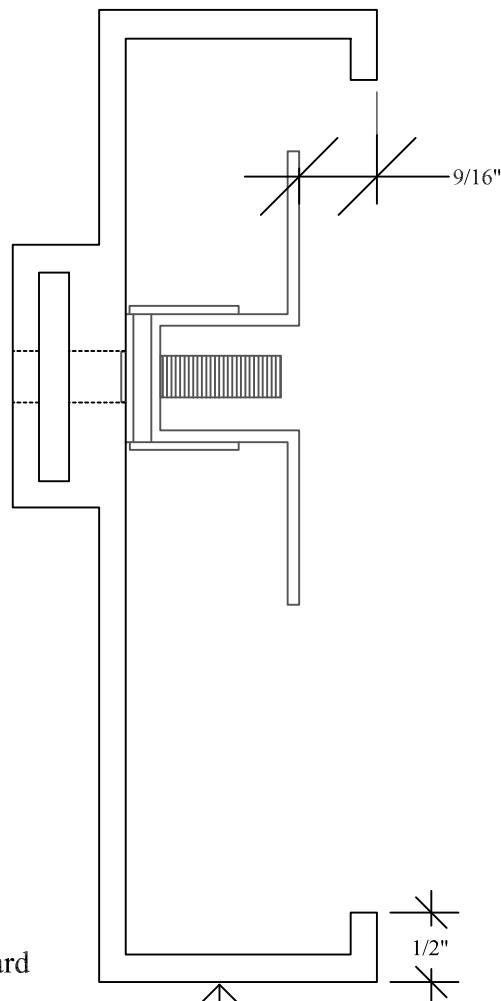
Rough opening size =
 Inside Frame Width (Nominal Opening) + 2-1/4"
 Inside Frame Height (Nominal Opening) + 3/4"



5-3/4" x 2" standard
FRP frame

*Please note for modified unequal jamb depths:

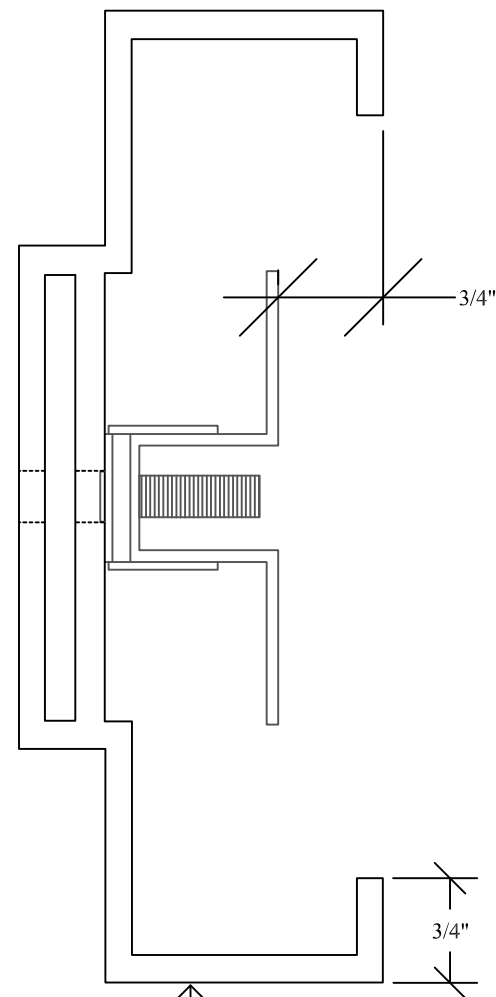
Rough opening size =
 Inside Frame Width (Nominal Opening) + 3"
 Inside Frame Height (Nominal Opening) + 3/4"



unequal FRP frame
(3-7/8 - 8-3/4")

*Please note for modified jamb depths:

Rough opening size =
 Inside Frame Width (Nominal Opening) + 2-5/8"
 Inside Frame Height (Nominal Opening) + 3/4"



modified FRP frame
(8-3/4"-12")

Compression Anchor
KD Frame