

EDGEWATER FRP DOOR

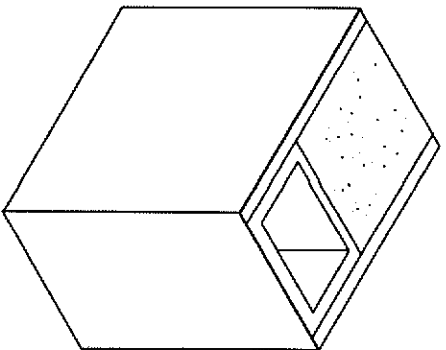
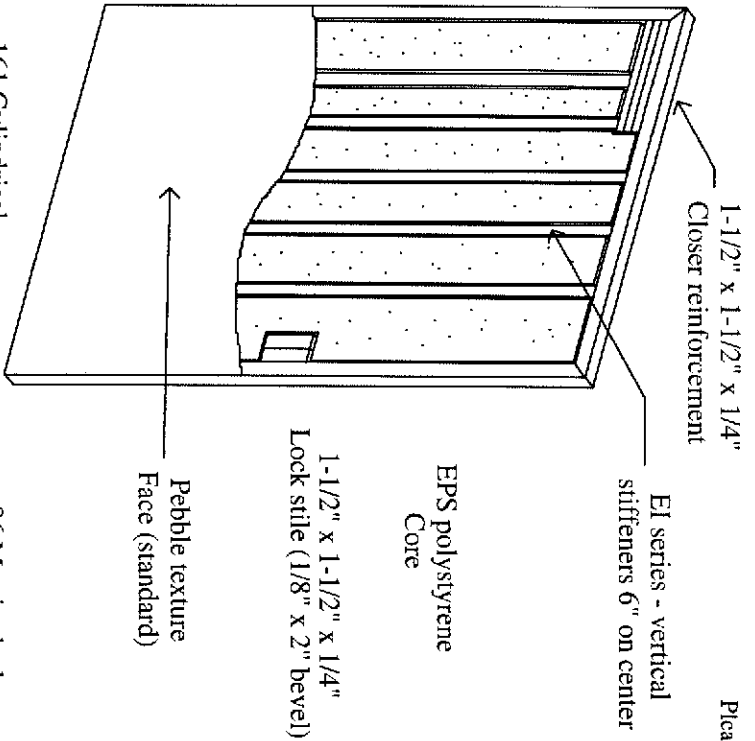
Commercial Fiberglass Doors & Frames

EI (Insti-lite) Series

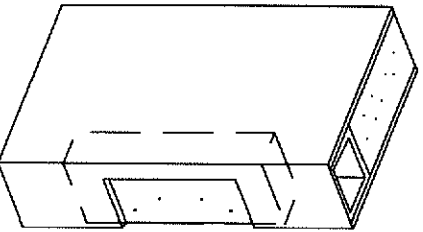
Specifications

Doors shall be EP series Manufactured by Edgewater FRP Door, Neenah, Wisconsin. Doors shall be of full flush construction 1-3/4" in thickness, manufactured utilizing pultruded fiberglass components for flexibility, durability, superior strength and chemical resistance. Laminated composite door faces shall be urethane fused to the stile and rail assembly, including the vertical stiffeners and surface area of core material, utilizing a two-part 100 percent reactive urethane adhesive, and then cured under pressure until completely bonded. Both lock and hinge stiles and top and bottom rails of the door shall be filled and ground smooth for a completely sealed construction. Doors shall have a beveled (1/8" in 2") lock edge. Frame to be 4-1/2" x 2" tubular aluminum or 5-3/4" x 2" FRP.

Please note: astragals supplied by Edgewater only if noted on order.



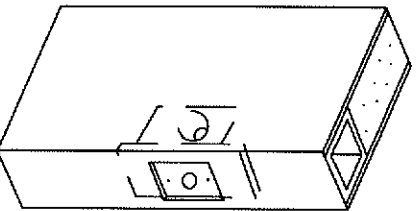
Door hinge Reinforcement



Butt hinge Pre-drilled for screws

High density polyethylene (HDDPE) hinge reinforcement

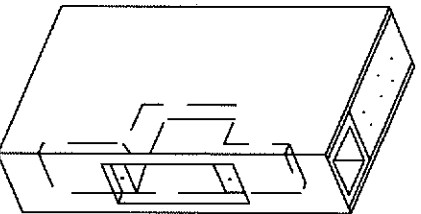
161 Cylindrical Lock reinforcement



High density polyethylene (HDDPE) lock reinforcement

40" from floor to centerline of strike (standard)

86 Mortise lock reinforcement



High density polyethylene (HDDPE) lock reinforcement

40" from floor to centerline of strike (standard)

Specifically designed for institutional facilities such as: schools, universities, and hospitals.

TRIFAB® VG 450 SHOWN
(400 & VG 451 SIMILAR)

* IN DOOR
PACKAGE

